

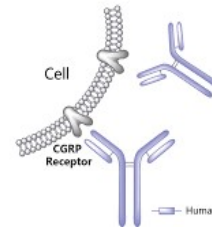
Anti-CGRP Monoclonal Antibodies

Are they different ?

Sites of Action & mode of administration

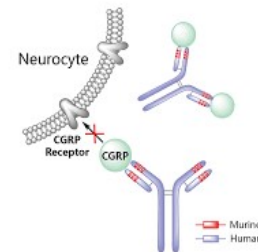
Targets the canonical CGRP Receptor

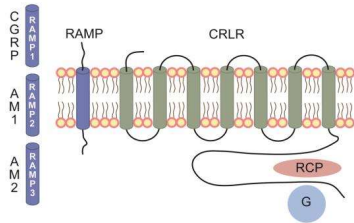
- Erenumab* (AMGEN/Novartis) - AIMOVIG



Targets the CGRP ligand

- Fremanezumab* (TEVA) - AJOVY
- Galcanezumab* (Lilly) EMGALITY
- Eptinezumab* (Lundbeck) – VYEPTI





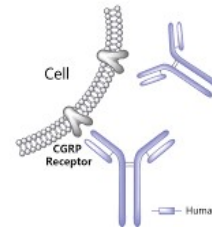
Anti-CGRP Monoclonal Antibodies

Are they different ?

Sites of Action & mode of administration

Targets the canonical CGRP Receptor

- Erenumab* (AMGEN/Novartis) - AIMOVIG

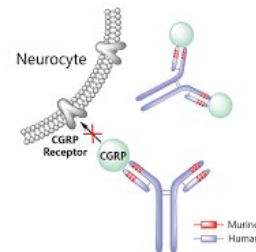


Targets the CGRP ligand

- ~~Fremanezumab* (TEVA) - AJOVY~~

- Galcanezumab* (Lilly) EMGALITY

- ~~Eptinezumab* (Lundbeck) - VYEPTI~~



Anti-CGRP MaBs Efficacy: Pivotal Clinical Trials, Real World data & OLE experience

Pivotal Clinical trials

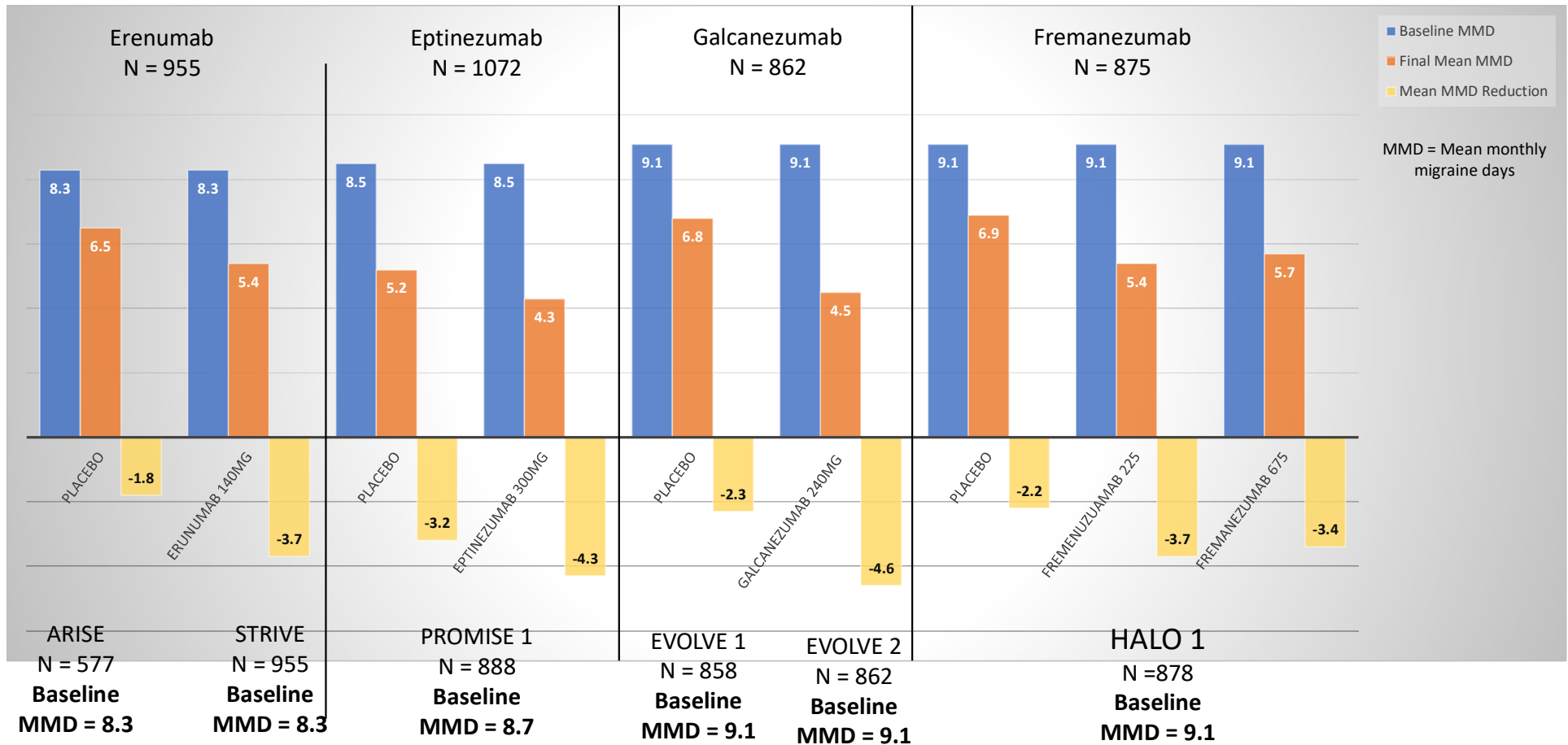
- Erenumab
 - EM – ARISE & STRIVE & LIBERTY
 - CM
- Fremanezumab
 - EM - HALO 1, FOCUS
 - CM - HALO 2, FOCUS
- Galcanezumab
 - EM - EVOLVE 1 & 2, CONQUER
 - CM – REGAIN, CONQUER
- Eptinezumab
 - EM – PROMISE -1, DELIVER
 - CM – PROMISE -2, DELIVER

- Real World Data
 - UK, Italy, Denmark, USA, Japan...
- OLE Long term exposure
 - All 4 drugs

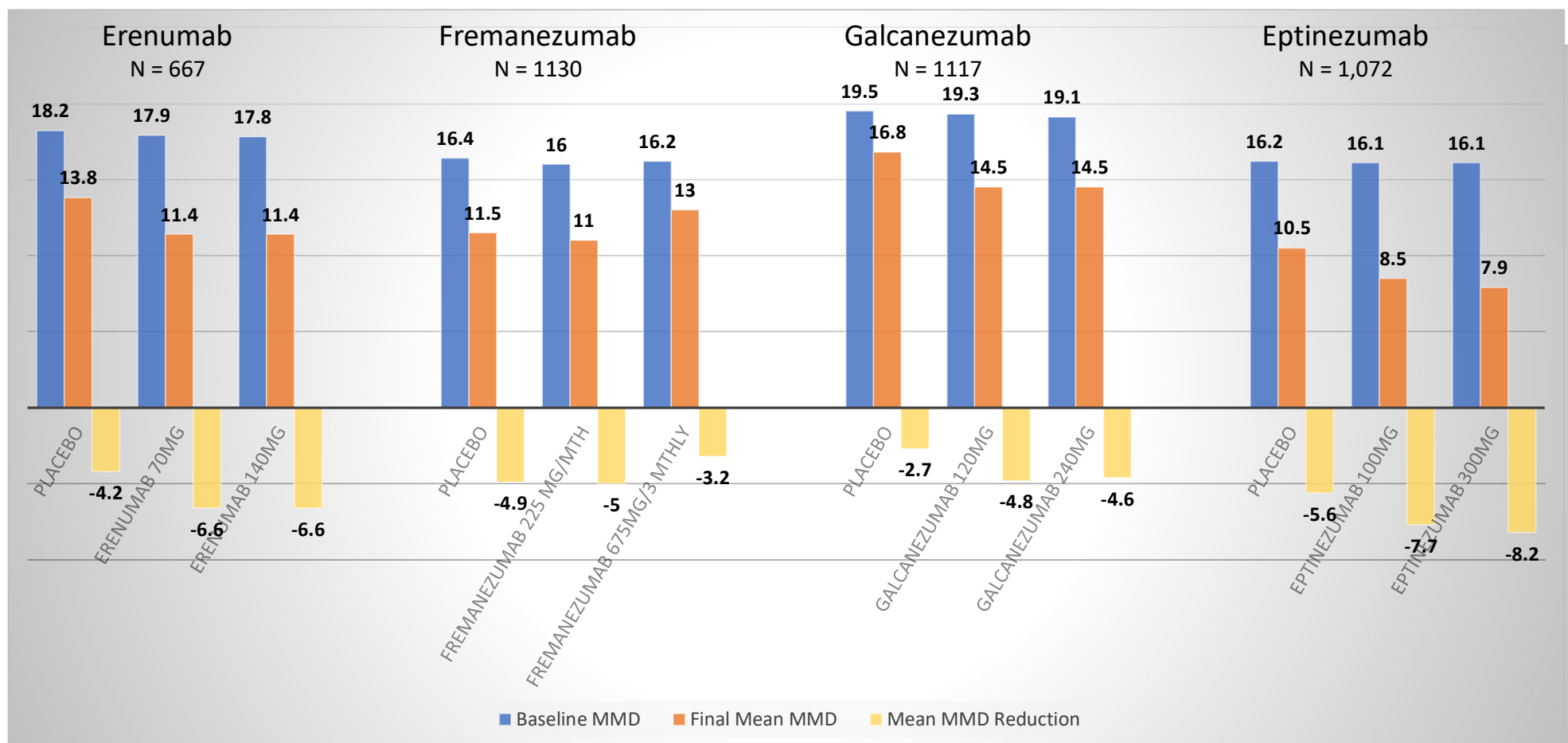


Making
sense of the
Data?

Similar Reduction in Mean Monthly Migraine days in Episodic Migraine for all MABs compared with Placebo



Effect on Mean Monthly Migraine days (MMD) Reduction in Phase 3 Chronic Migraine Trials



Do they have a sustained response in Migraine?

Erenumab 1 year Open label extension in Chronic migraine

Galcanezumab 1 year open label study in Episodic Migraine

Tepper et al. 2018, Camporeale et al, 2017

Figure 2. Change from parent study baseline in monthly migraine days

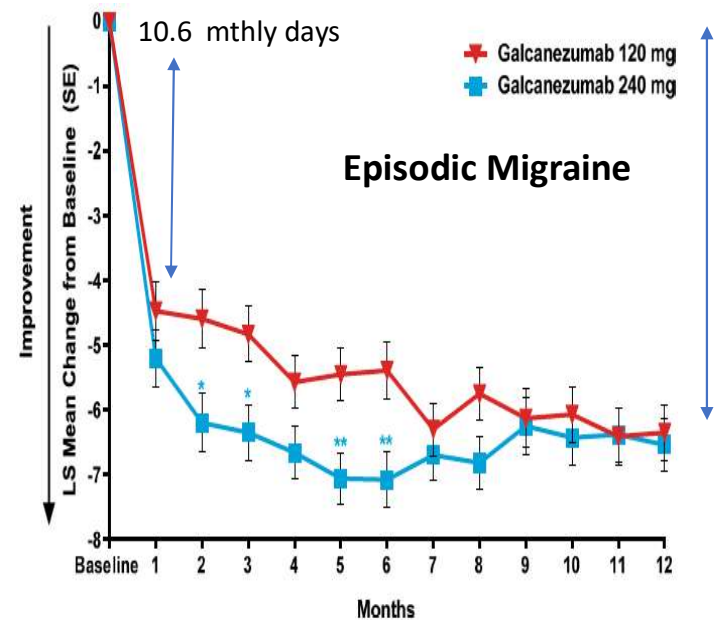
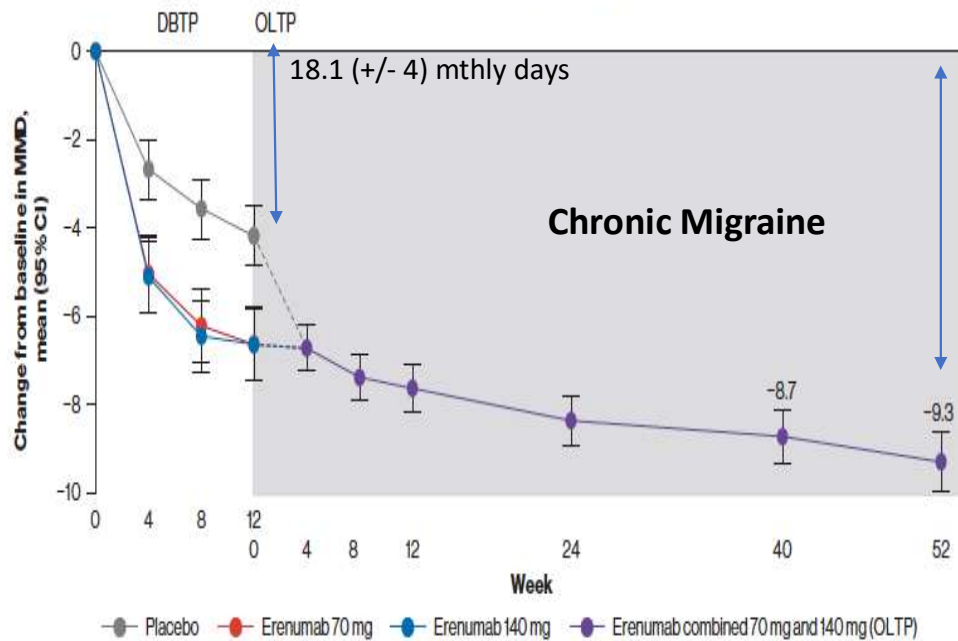


Fig. 2 Overall mean change from baseline in the number of monthly migraine headache days. * $P < .05$; ** $P < .01$. Overall least squares (LS) mean change from baseline in the number of migraine headache days for patients who were treated with monthly open-label injections of galcanezumab 120 mg or 240 mg